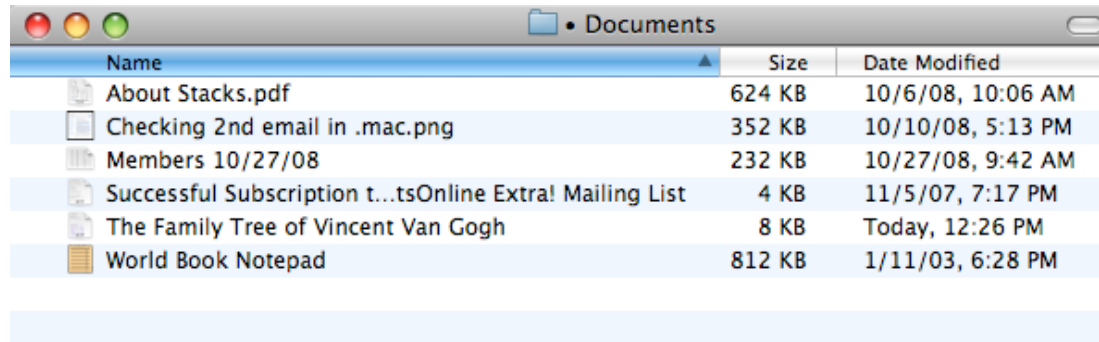
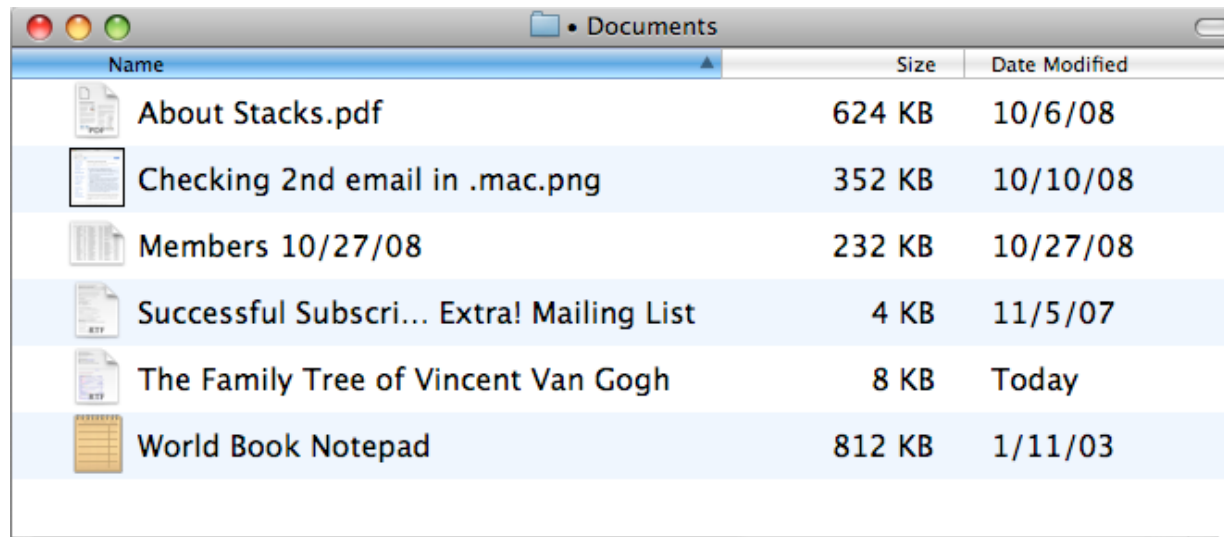


Changing the View Options in OS X

The default sizes of **Icons** and of the **Text**, in the **Finder Windows** is usually too small for many of us to read comfortably. This example if a Window in “List View” is at the OS X Default sizes.



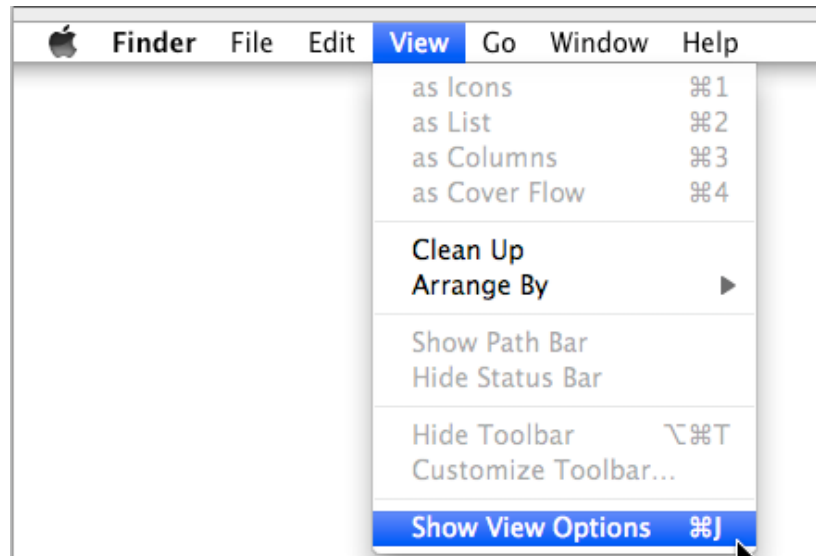
Fortunately, there are some simple changes that you can easily do that can make them much easier to see and to work with.





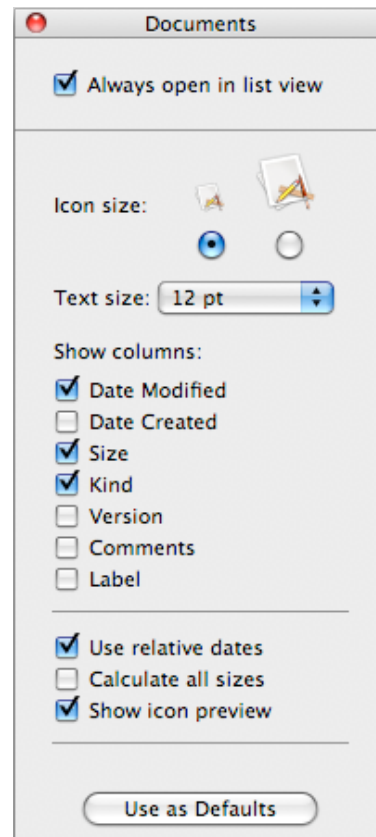
To adjust the default sizes, do the following

From any **Finder Window**, open the View Menu, drop-down as shown, and select "**Show View Options.**"

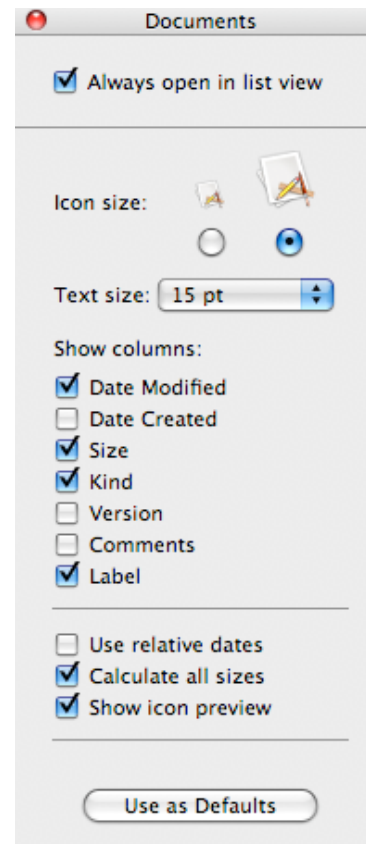


The **View Options Window** will display similar to the following illustration. There are a number of options that you may select to suit your own personal preferences.

Before Changes

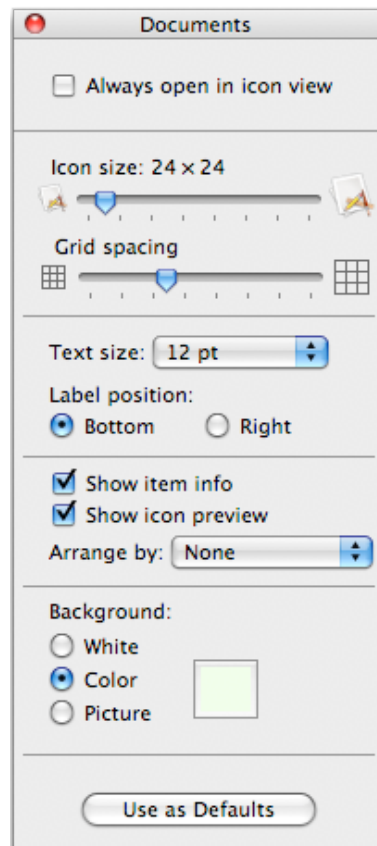


After Changes

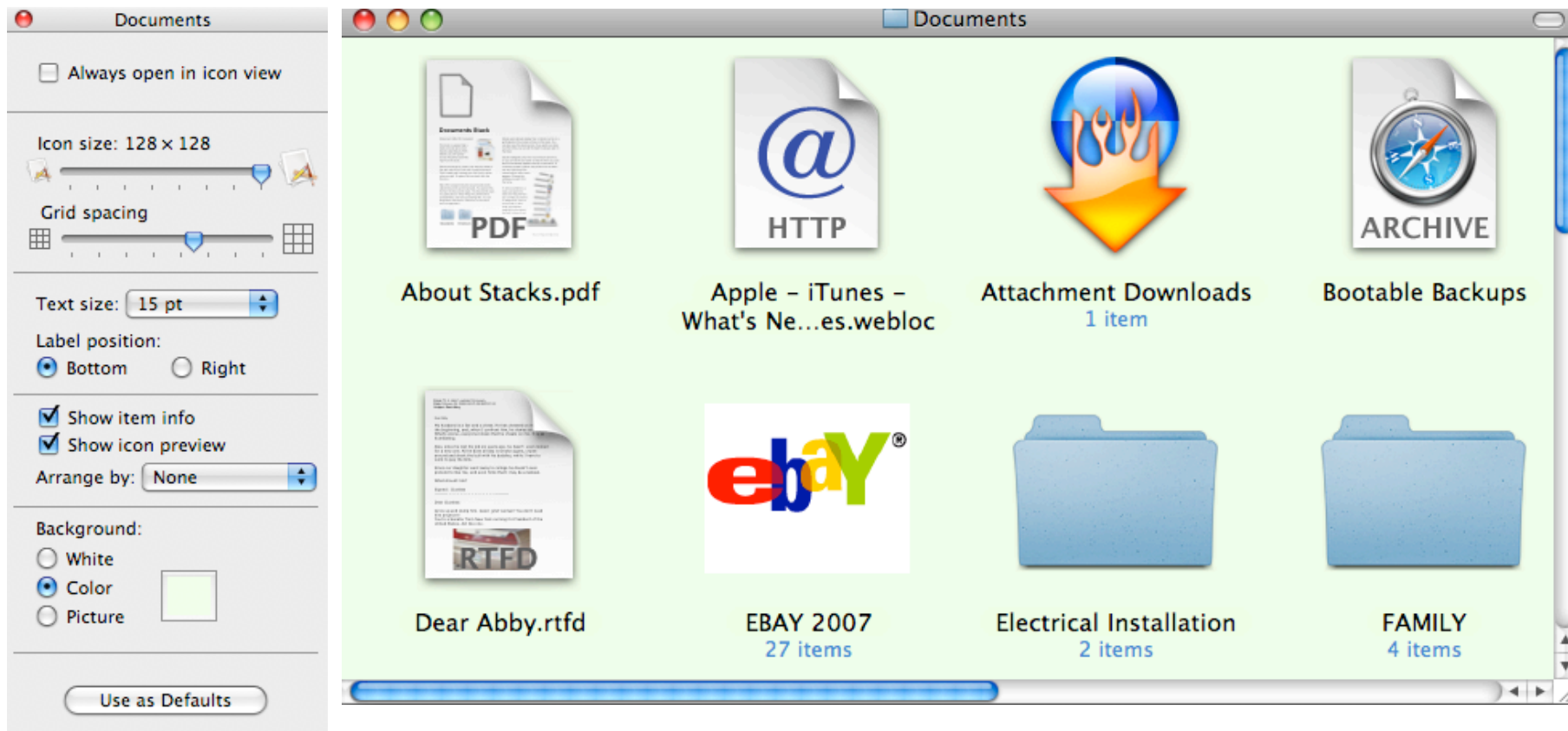


I personally turn-off the "Use relative dates" selection, turn-on the "Calculate all sizes" Option, and turn-on the Label option.

In Icon View, your icons sizes may be made very small, and the grid spacing may be close together.



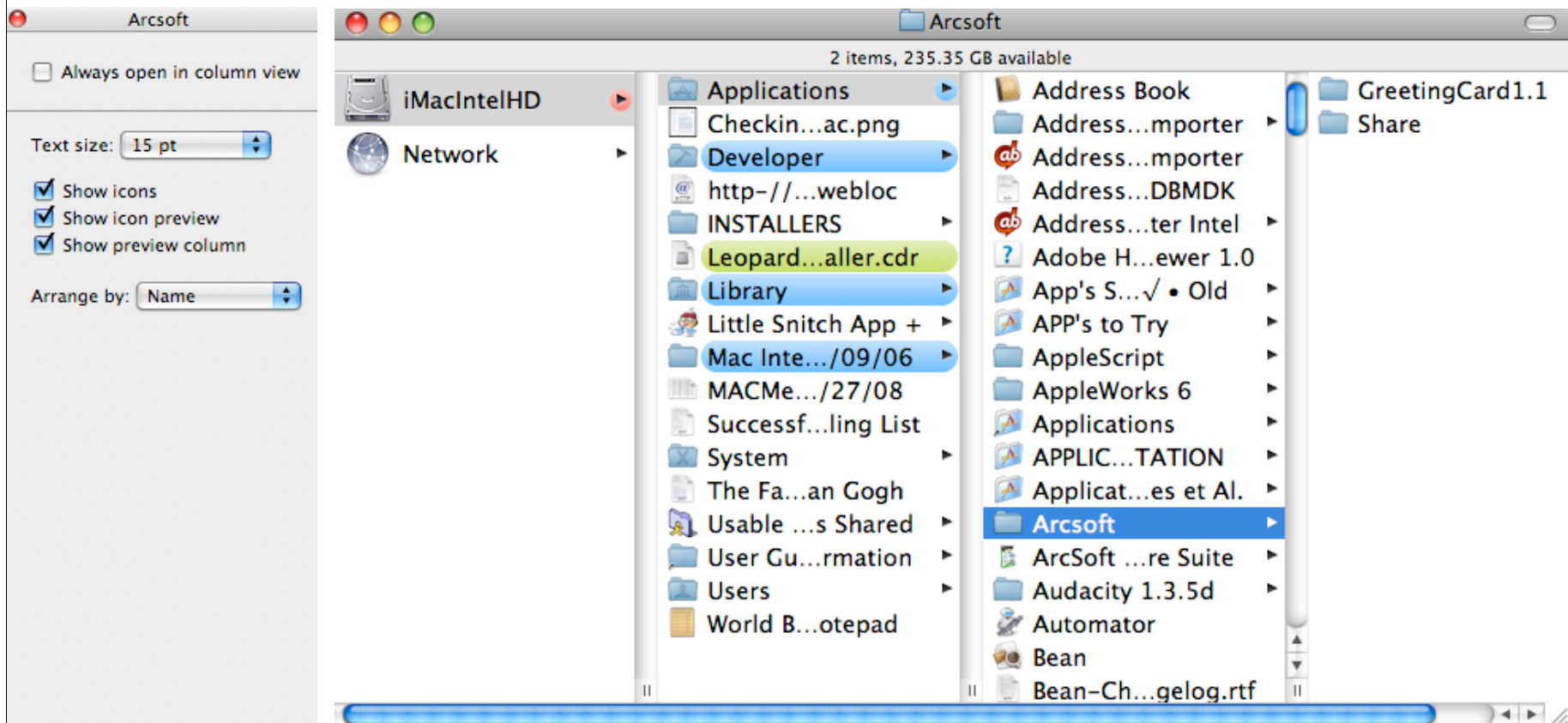
In Icon or you may view your icons in larger sizes with larger captions.



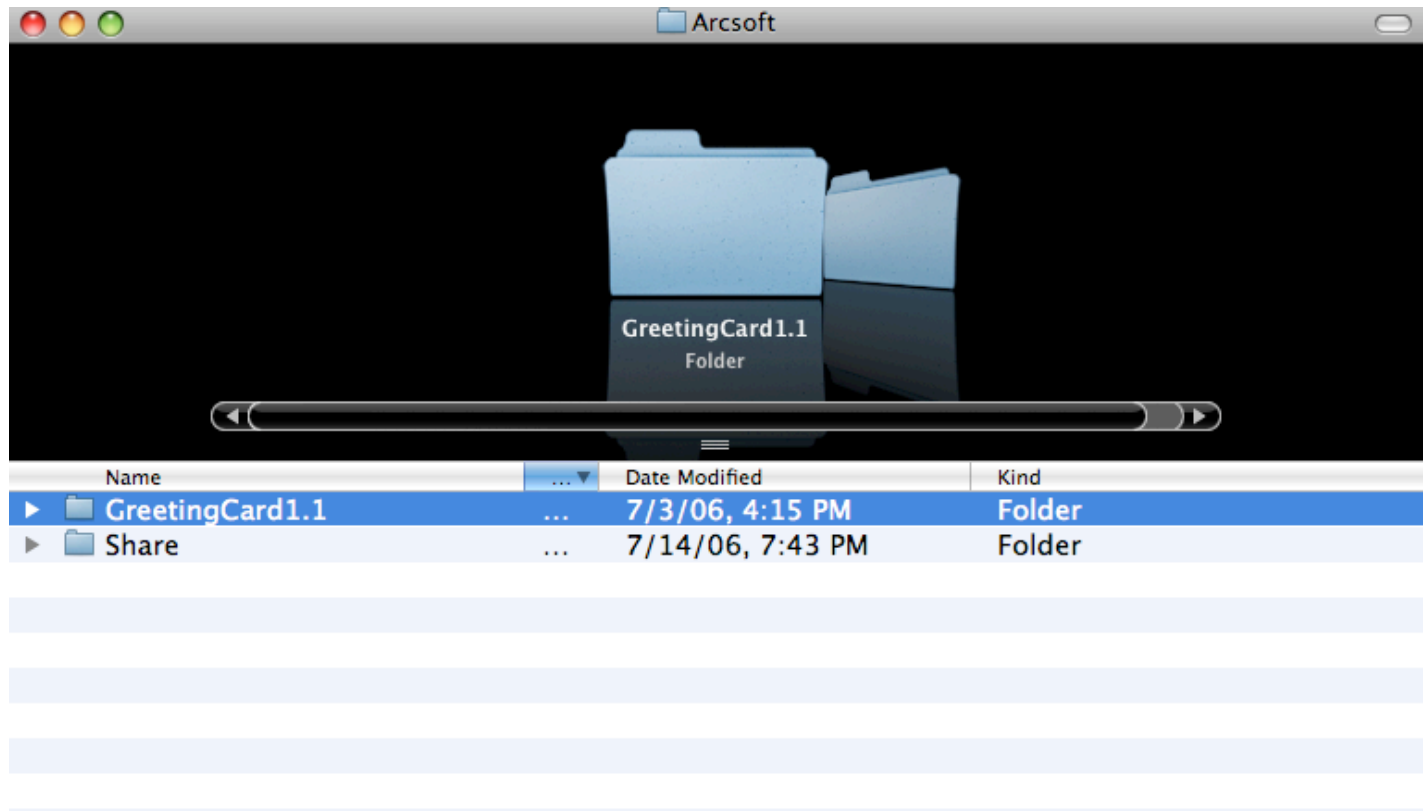
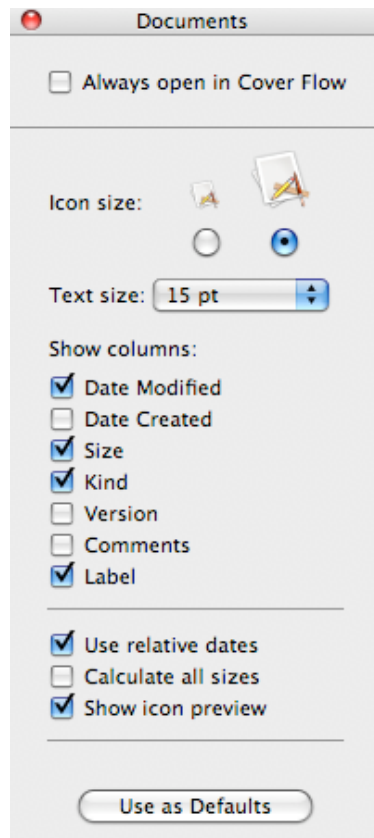
Icon sizes and captions are easily adjusted by using the Icon Size slider bar. You may also adjust the grid spacing to suit your own desires.

You can also change the background color, or use your favorite picture as a background.

You may also select from a number of different options if you choose to view windows in Column View.



Cover Flow is a three-dimensional graphical user interface included with iTunes, the Macintosh Finder, and other Apple Inc. products for visually rummaging through files and digital media libraries via cover artwork.



Cover Flow may be useful for use as described above, in general one would not use it as the default viewing option.

Remember! Apple's Help Menu is an excellent First Choice for Solving your Mac related problems or issues.

Following portion of information is quoted from Apple's Help instructions from the Help Menu in the Finder

Aligning, labeling, and resizing icons

You can modify the size, labeling, and alignment of icons in Finder windows or on the desktop.

To modify icons:

For a Finder window, open the folder for the window whose icons you want to adjust. For the desktop, click the background area of your screen.

Choose View > Show View Options and make your choices.

Each of the views—icon, list, column, or Cover Flow—has its own view options....

Choose Help from the computer that you are using to access the correct Help Menu for your computer and Operating System version.